

# Hibernation Animals

Hibernation occurs during the winter months when food is scarce. When animals hibernate they lower their heart rate and breathing in order to need less food to survive. Animals emerge from hibernation sometime in the spring, which is usually sometime between February and May.

Color the animals below!

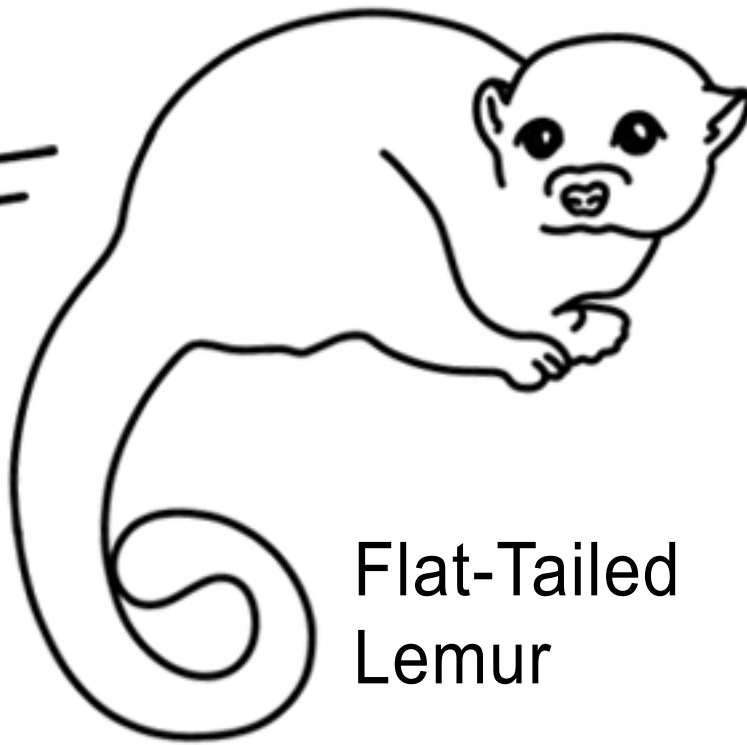
Skunk



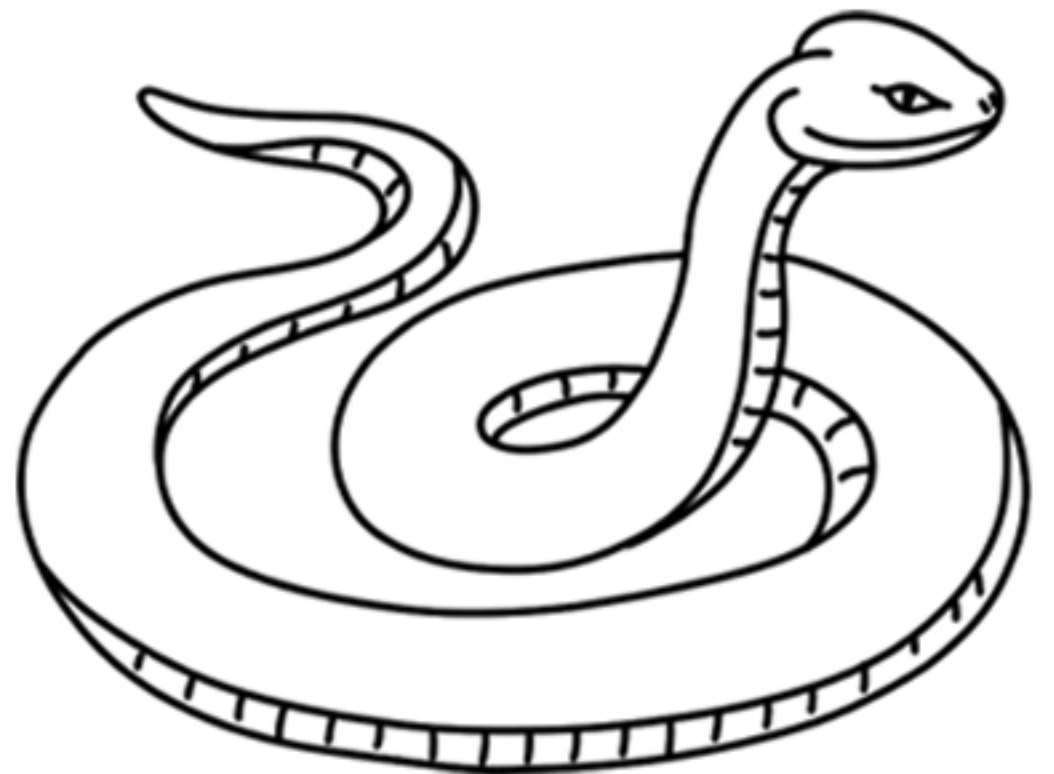
Wasp



Snail



Flat-Tailed Lemur



Snake



Bat



Wood Frog